

## Technical specifications

*Security Lucernario aerante for lightwells*

*INOX series*



### Product description

Walk-on skylight with laminated shatterproof glass, drainage channel equipped with drains for rainwater runoff and air intakes for venting cellar rooms, the latter protected by anti-insect meshes to preserve cleanliness.

Inspection channel for cleaning, covered by a removable grille.

### Materials

AISI 304 stainless steel and tempered laminated glass.

### Technical Sheet Contents

Page 1 - Product Overview

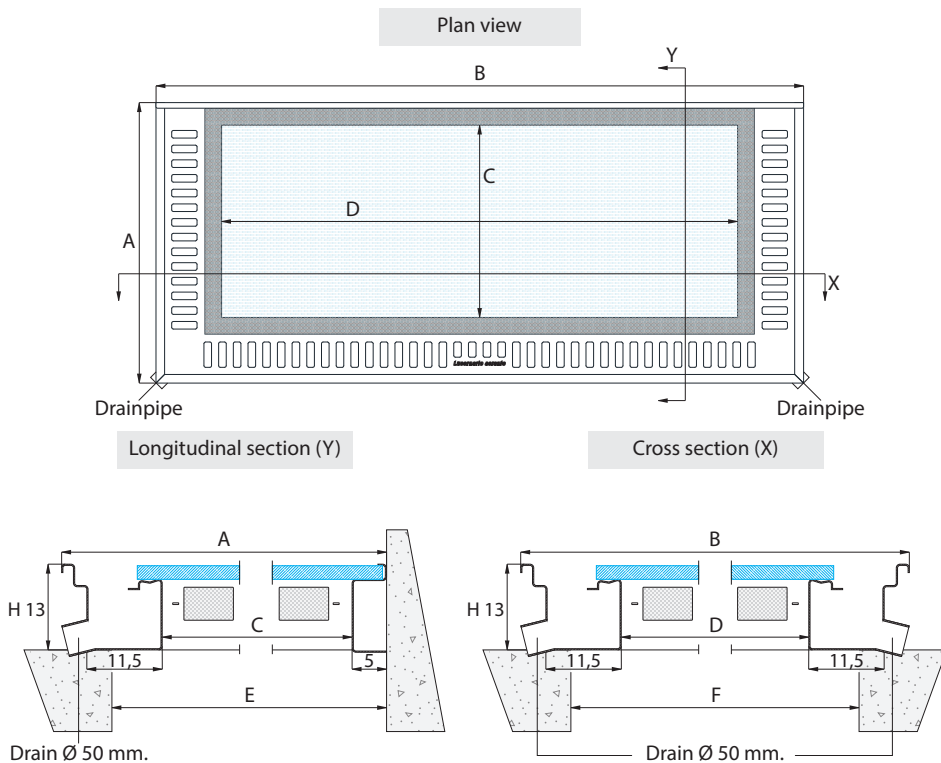
Page 2 - Dimensional specifications

Page 4 - Technical performances

Page 6 - Additional notes

## Technical specifications

### Technical product detail



### Available dimensions

Model	Product dimensions		Luminous compartment			"From-to" base hole		Weight	Air intake surface area*
	A	B	C	D	CxD(m <sup>2</sup> )	E	F	Kg	(cm <sup>2</sup> )
XS55	55	130	34,6	99,6	0,35	35-47	100-114	44	524
<b>NEW</b> XS85	85	130	64,6	99,6	0,64	65-77	100-114	63	782
S65	65	150	44,6	119,6	0,53	45-57	120-134	57	665
S85	85	150	64,6	119,6	0,77	65-77	120-134	73	805
M65	65	170	44,6	139,6	0,62	45-57	140-154	64	735
L65	65	190	44,6	159,6	0,71	45-57	160-174	71	805

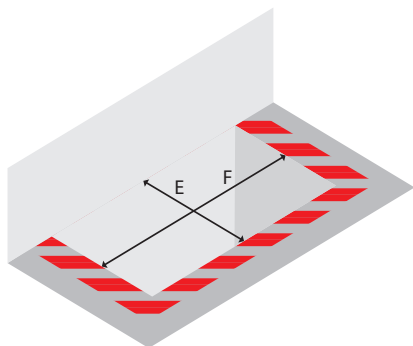
Where not specified, measurements are in centimetres.

\*The surfaces do not take into account the anti-insect mesh fitted behind the air intakes, the empty part of which is equivalent to 46,3% of the whole.

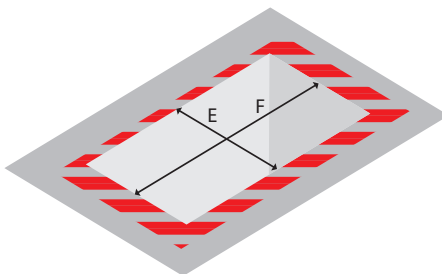
## Technical specifications


### Supporting base

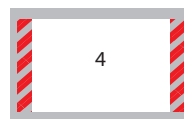
Lightwell by the wall



Lightwell away from wall



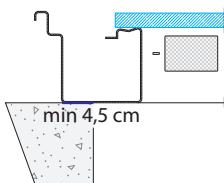
 = skylight support



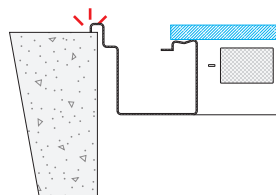
The load-bearing capacity of the *Lucernario aerante INOX* has been tested with a support base of three adjacent sides (figures 1 and 2), but resting on two opposite sides (figures 3 and 4) is also allowed.

### Support base

YES



NO



The Skylight must rest on the reinforced concrete over at least 4.5 cm.  
Any other method of support is forbidden.

## Technical specifications

Other models and dimensions available on request

MX-3B



Same model as sizes XS, S, M, L, custom sizes.

MX-4B



Model with custom size perimeter grid.

Models MX-3B and MX-4B may be subject to dimensional restrictions.  
Manufacturing times from 40 days.

## Technical specifications

### Composition of glazing

Upper glass	8 mm non-slip with circle pattern, tempered
Central glass	5 mm clear float, tempered
Lower glass	5 mm clear float, tempered

### Non-slip performance

Non-slip performance certified with BCRA-Tortus method	$\mu > 0,40$
Non-slip performance certified with pendulum method according to BS 7976-2:2002 standard	value > 35
Non-slip performance certified according to DIN 51130:2014	classification R11
Non-slip performance certified according to DIN 51097:1992	classification B
Non-slip performance certified with BOT 3000 method according to ANSI A137-1:2012 standard	DCOF > 0,42
Resistance to surface abrasion according to UNI EN ISO 10545-7:2000 standard	PEI III

Data supplied by the manufacturer

### Performance Summary

Openable	No
Burglar-proof class	RC2 <i>(Test report on the website <a href="http://inox.lucernarioerante.it">inox.lucernarioerante.it</a>)</i>
Walkability class	C2 <i>(Test report on the website <a href="http://inox.lucernarioerante.it">inox.lucernarioerante.it</a>)</i>
Thermal insulation	NPD
Acoustic insulation	NPD

NPD : No performance determined

### 1. Further notes

Check the suitability of the product for the building under construction before purchasing and installing it.

Read the *installation instructions* carefully before installing the product.

Read the *User Manual* carefully before using or servicing the product.

In the event of a claim, read the *Warranty* carefully and then contact customer service.

The *installation instructions*, the *User Manual* and the *Warranty* are documents that can be found inside the purchased product or on the [inox.lucernarioaerante.it](http://inox.lucernarioaerante.it) website.

### 2. Discouraged and prohibited uses

We do not recommend installing the *Lucernario aerante INOX* to cover heated and inhabited environments, as this would result in heat dispersion.

We do not recommend placing permeable objects, i.e. objects that can be attacked by water and humidity, underneath the *Lucernario aerante INOX*.

Placing fresh food under the *Lucernario aerante INOX* is forbidden.

The *Lucernario aerante INOX* is not suitable for the transit of vehicles, even at walking pace.

### 3. Condensation and other moisture problems

Condensation occurs when warm, moist air collides with a cold surface (e.g. the glass or frame of the *Lucernario aerante INOX*). When this air cools down, the amount of water contained in it deposits as condensation. The formation of condensation is therefore a natural process which has nothing to do with the quality of the product.

The causes of excessive humidity can be:

- Cooking, showering, drying clothes hanging up or in a dryer, using the washing machine.
- Sweating and breathing of people.
- Presence of indoor plants.
- Insufficient air circulation.
- Presence of water wells, open manholes.
- Poor or lack of waterproofing of retaining walls or basement window.
- Water leaks.

Condensation cannot cause any damage to the *Lucernario aerante INOX*.

### 4. Advice on preventing condensation

In the design and construction phase:

- Connect the drain of *Lucernario aerante INOX* to an external drain line, preferably to a leaky pit to be buried in the garden as far as possible from the basement walls.
- Waterproof the outside of the retaining walls and the external walls of the cavity with a bituminous sheath (basement window well or shaft).
- In the presence of a ventilated crawl space below the flooring of the rooms in the basement, make sure that the venting does not take place inside the basement window wells or shafts covered by the *Lucernario aerante INOX*.
- Prefer the use of lightwells with closed bottom
- Install thermal insulation panels to cover the inside of the cavity (basement window well or shaft).
- Install fans to force air or controlled mechanical ventilation.

During use:

- Remove possible sources of moisture.
- Open the windows at least twice a day, for thirty minutes.

Thank you for purchasing *Lucernario aerante INOX*.

The product and the brand *Lucernario aerante*® are the property of Bottega del Ferro.  
Bottega del Ferro reserves the right to change the characteristics of the products shown without notice.  
This document and all other documents related to the *Lucernario aerante INOX* products can be found on the website [inox.lucernarioaerante.it](http://inox.lucernarioaerante.it).



Bottega del ferro  
Via del Boscone, 8  
25014 Castenedolo (BS) Italy  
T. +39 030 2731985  
F. +39 030 2130930  
[info@bottegadelferro.net](mailto:info@bottegadelferro.net)  
[www.bottegadelferro.net](http://www.bottegadelferro.net)  
[inox.lucernarioaerante.it](http://inox.lucernarioaerante.it)